

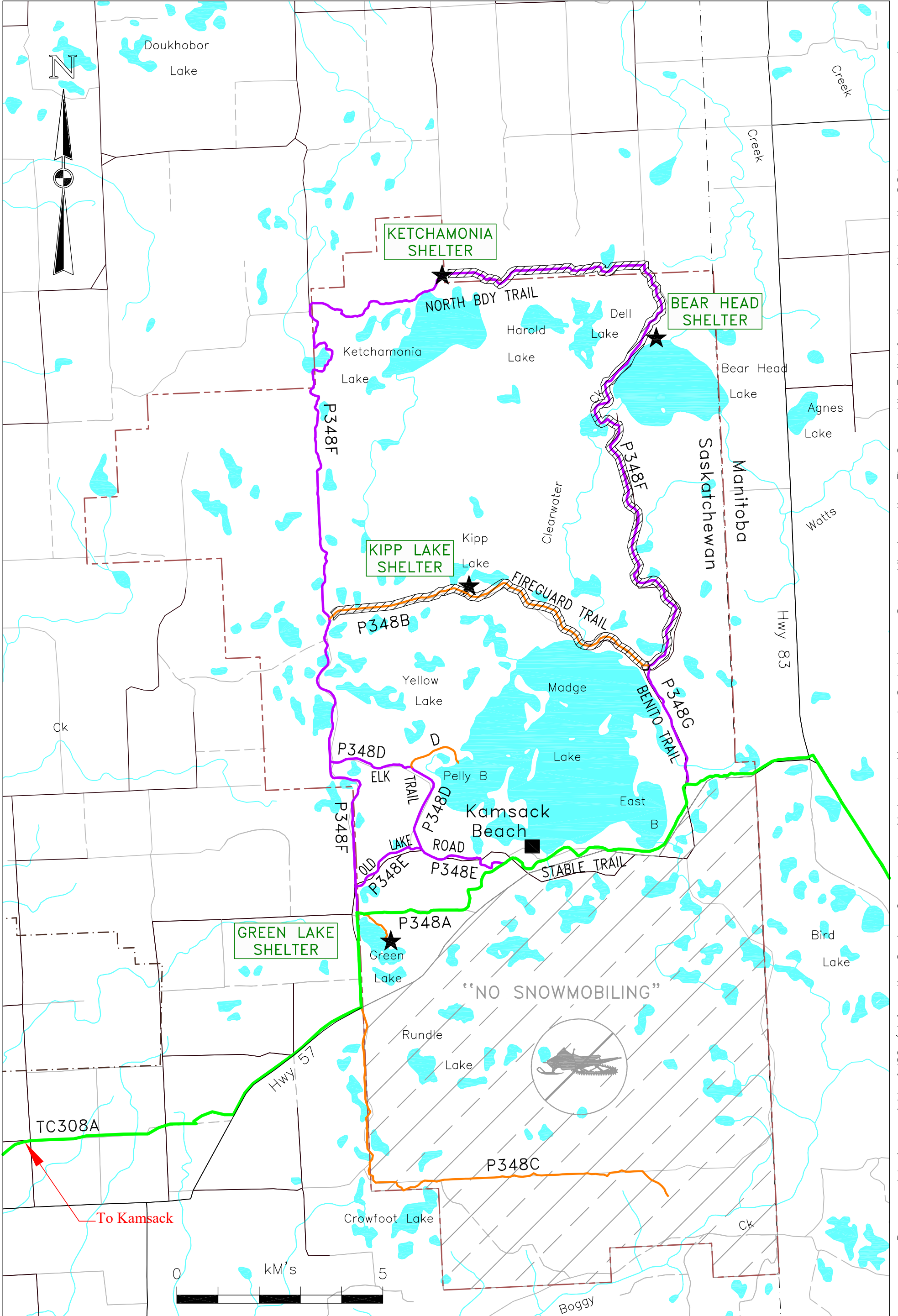
Duck Mountain Provincial Park Trails

Club #P348



Latest Update Jan 21/2021


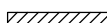
Latest Print Jan 21/2021

PARTIAL GPS'D ALL TRAILS on Dec 03/2019



Trail Types:

- Trans Canadian 
- Primary 

- Secondary 
- Trail Closed 

Legend:

- Fuel Site 
- Warm-up Shelter 

Base map data is copyright of ISC / Information Services Corp. and provided under License to Saskatchewan Snowmobile Association. The Snowmobile Trail Information provided on the S.S.A. maps may have changes that have occurred after printing. Please check with local authorities prior to accessing trails.